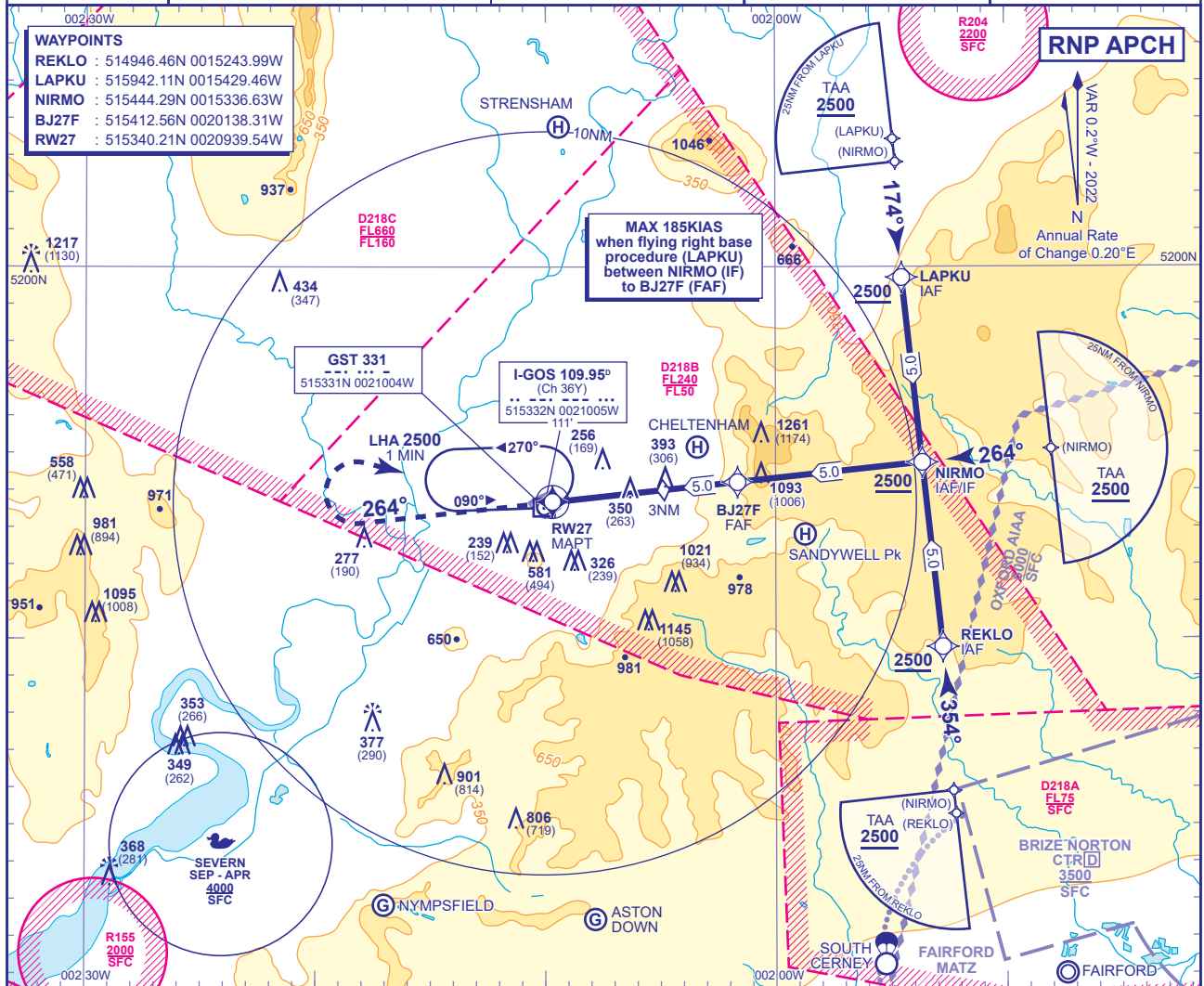


<div>28</div> <div>MSA 25NM ARP</div>	APP 128.555	GLOSTER APPROACH	AD ELEVATION 101	TRANSITION ALTITUDE 3000
	TWR 122.905	GLOSTER TOWER	THR ELEVATION 87	
	RAD 128.555, 120.980	GLOSTER RADAR	OBSTACLE ELEVATION 1261 AMSL (1174) (ABOVE THR)	
	ATIS 127.480	GLOSTER INFORMATION	BEARINGS ARE MAGNETIC	



RECOMMENDED PROFILE Gradient 6.13%, 373FT/NM											
NM to RW27	5	4	3 (SDF)	2	1						
ALT(HGT)	2000(1913)	1620(1533)	1250(1163)	880(793)	510(423)						
<div><div><div>MAPt (LNAV): RW27</div><div>Continuous climb to 2800, initially straight ahead to 1500 then turn right to NDB(L) GST at 2800 or as directed. (See Note 1 and 2).</div></div></div>											
Aircraft Category		A	B	C	Rate of descent	G/S KT	160	140	120	100	80
Procedure OCA(OCH)	LNAV	600(513)	600(513)	600(513)		FT/MIN	990	870	750	620	500
VM(C)OCA (OCH AAL)	Total Area	1000(899)	1000(899)	1500(1399)							
	North of RWY 04/22 and 09/27	830(729)	830(729)								
NOTES 1 Missed Approach Procedure not available without NDB(L) GST . 2 Missed Approach Procedure shall be converted to a conventional Missed Approach upon reaching 1500 . 3 No Missed Approach turns permitted prior to MAPt.											
CHANGE (5/24): FAIRFORD DANGER AREAS ADDED											